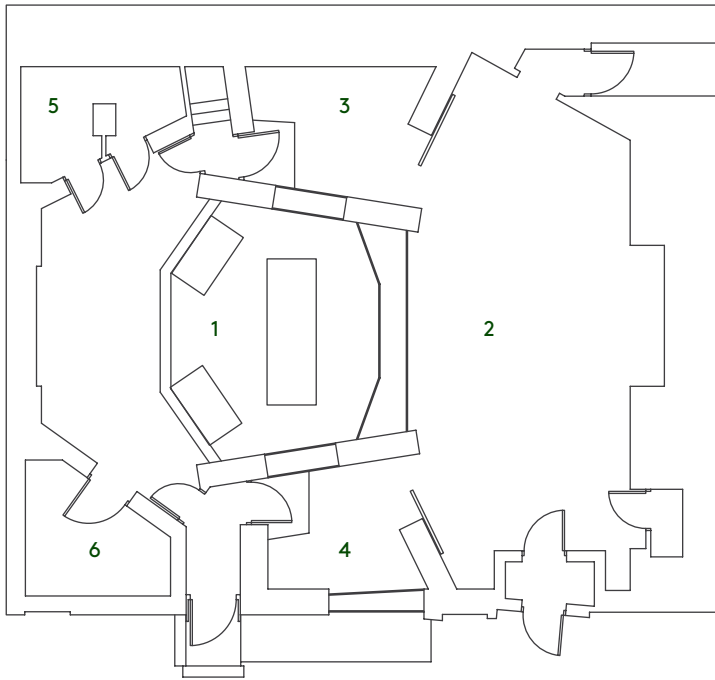


STUDIO A



AT METROPOLIS



1. Control Room 55m²
2. Live Room 80m²
3. Dead Room 15m²
4. Stone Room 5/11m²
5. Machine Room 11m²
6. Machine Room 8m²

Equipment

- SSL 9072 J Series console
- Avid Pro Tools HDX 2
- Logic Pro X
- Prism ADA-8x Converters (40 i/o)
- Genelec 1235 Main Monitors
- Yamaha NS10
- Genelec 8351a
- Nearfield monitors (subject to availability): Unity Audio Rock, Focal Twin 6 BE, Adams S3X-H, ProAc Studio 100, Acoustic Energy AE22, Genelec 1031a, Auratone 5c
- Briston Amplifiers
- Emagic Unitor 8 MIDI interface
- Allen and Heath ME-U Monitoring System
- Fazioli 7'6" grand piano
- Large surface areas for extra ancillary equipment
- Three separate recording areas, largest suitable for up to 26 piece string section
- Private reception area, lounge, kitchen and bathroom

Outboard Including

- Neve 1073 Classic x 2
- Past Neve 33105 Style Mic Pre (x2)
- AI Smart C1
- DBX 160 (x2)
- DBX 165a
- Empirical Labs Distressors EL8-X (with British Mode) (x2)
- Manley Stereo "Vari-MU" Limiter Compressor
- Neve 2254 compressors with stereo link (x2)
- Prism Maselec MLA-2
- Tube-Tech CL-1A
- Urei 1176 Silver Face (x2)
- GML 8200 stereo EQ
- K+H Custom Mod UE 400 2 Channel EQ
- Prism Maselec MEA-2
- Pultec EQP1A (x2)
- Pultec EQP1
- Pultec MEQ5 blue
- Pultec MEQ5 silver
- Summit EQF-100 x 2
- Sansamp Tech 21 NYC
- Eventide H3000 Multi FX
- Lexicon 480L
- Lexicon PCM 70
- Roland DimD
- Plate Reverbs (available on request)